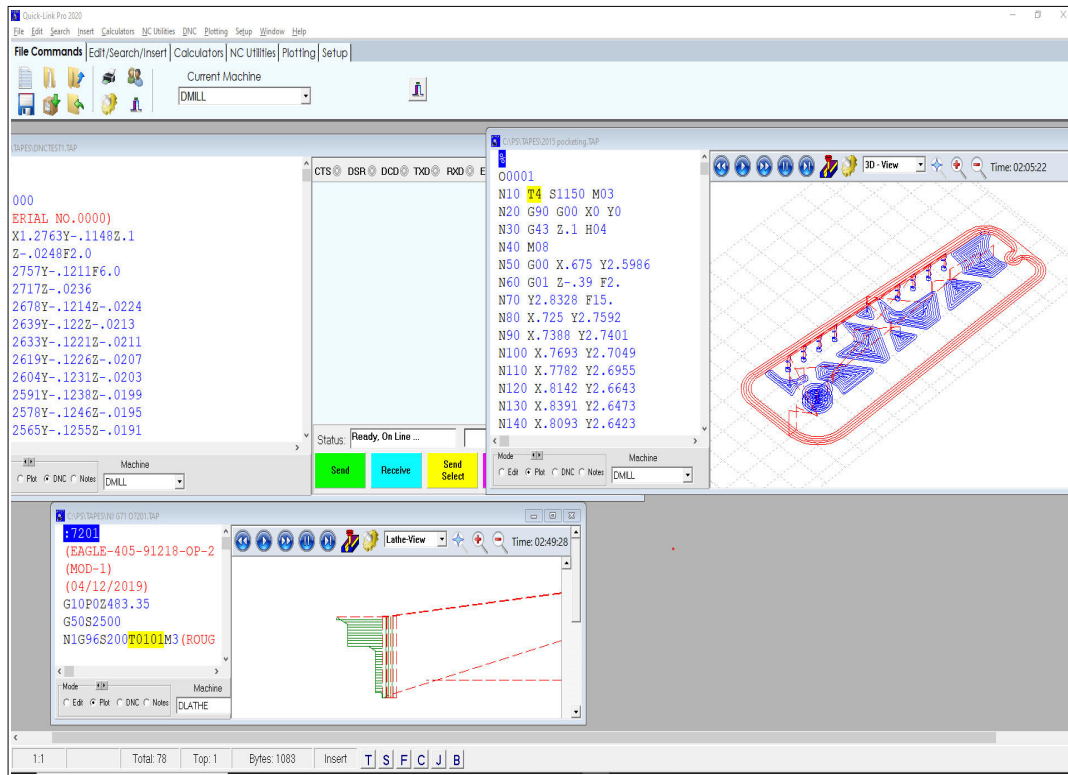


06/29/2020

Quick-Link PRO 2020

State of the Art Editing, Verification, and DNC



Versatile editing windows. In addition to editing files, each editing window now has the ability to Plot, execute DNC commands and add Notes to the current program being edited. True multi-tasking allows for each of the tasks to be running at the same time. Edit in one window, while sending a file in another, while plotting a large file in another.

Plotter now includes support for Fixture Offsets, Higher speed, Rotary Axes, Lathe roughing cycles, improved threading cycles, radius and chamfer in NC-Code, Improved cycle time calculations using machines acceleration properties.

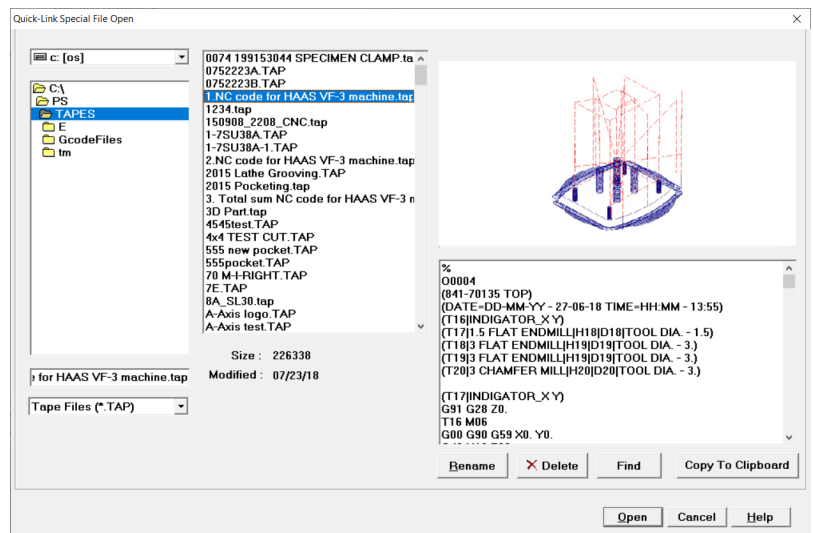
New or Improved commands by menu:

File Menu:

- Special Open – Example:-->
- Print to PDF file
- More recently used file names

Edit Menu:

- Notes Editor – Basic Word processor for keeping notes/pictures.



Search Menu:

- Jump to Sub/Tool – Option to create a new window with the selected Sub or Tool.

Insert Menu:

NC-Code macros, custom prompts
Reference information
Work Offsets (G54)

Calculators Menu:

Basic Motion:

(Linear/Rapid/Circular/Offset/Fillet)

Circular Pocketing/Hole Bore

Drilling Patterns:

(Bolt circle,line,rectangle,grid)

Geometry Workshop*

Ingraver (Text Engraving)

Lathe Facing

Lathe Grooving

Mill Facing

Rectangle/Slot Pocket

Feed & Speed Calculator

Thread Cycle

Thread Milling

Triangle Solver

NC-Utilities:

Information has been enhanced

Rotate / Mirror / Scale / Translate / Inc/Abs

Swap Text (Exchange)

B-Macro enhanced – G65,66,67, Haas M97

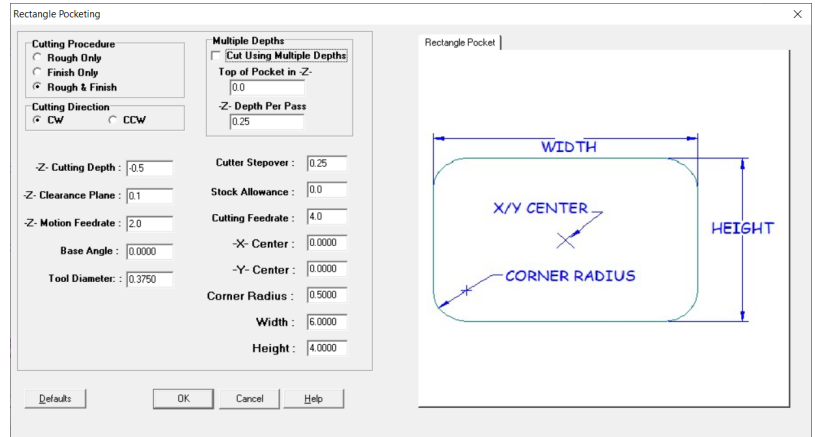
File Clean: Strip TABS,Convert to Uppercase,CR/LF filter

DNC:

Send/receive from multiple machines at once

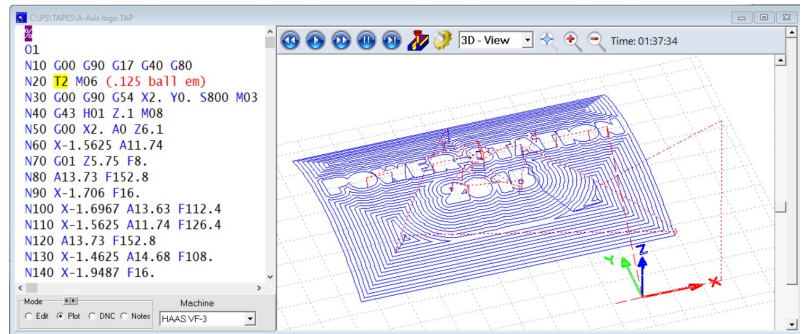
Each open window can be taking to it's own CNC

Basic DNC server to start a list of machines/windows at once



Plotter Menu (New)

- DXF fixture now supports light weight polylines
- Improved cycle time calculations
- Operation dialog: print tool images, operation history
- G54 series offsets/G10 processing
- G92 logic fixed
- Alternate M98 P51012 with no "L" format



Setup Menu:

- Properties, caps on, tool bar selection
- Machine setup now integrated
- File new on start up
- Your choice of menus, traditional text, Quick-Link classic tool bar, modern ribbon tool bar. These styles can be used in any combination.
- Yellow highlighter on tool changes

Window Menu:

- Tile Horizontal and Vertical
- Open Window jump to list
- Maximize active

*Geometry Workshop

- EZ Geometry – Simplified generation of basic mill/lathe shapes.
- Full 2D DXF Open/Save
- Full set of geometry creation tools (Points, lines, arcs, curves)
- Full set of Modification tools, move, rotate, scale, trim, extend, fillet, chamfer
- Tool Paths for: Boundary Milling (With diameter offset), engraving, mass drilling, OD turning, ID Boring

